

NOTICE OF MEETING

Meeting	Executive Member for Education and Skills, Human Resources and Performance Decision Day
Date and Time	Wednesday, 27th March, 2019 at 2.00 pm
Place	Chute Room, The Castle, Winchester
Enquiries to	members.services@hants.gov.uk

John Coughlan CBE
Chief Executive
The Castle, Winchester SO23 8UJ

FILMING AND BROADCAST NOTIFICATION

This meeting may be recorded and broadcast live on the County Council's website. The meeting may also be recorded and broadcast by the press and members of the public – please see the Filming Protocol available on the County Council's website.

AGENDA

Key Decisions - Non-Exempt/Non-Confidential

- 1. KING'S FURLONG INFANT SCHOOL NURSERY** (Pages 3 - 16)

To consider a report of the Director of Culture, Communities and Business Services regarding King's Furlong Infant School Nursery.
- 2. NORMAN GATE SCHOOL INTERNAL ALTERATIONS** (Pages 17 - 28)

To consider a report of the Director of Culture, Communities and Business Services regarding Norman Gate School.
- 3. EXPANSION OF PROSPECT SCHOOL** (Pages 29 - 40)

To consider a report of the Director of Culture, Communities and Business Services regarding the proposed expansion of Prospect School.

Non-Key Decisions - Non-Exempt/Non-Confidential

4. PROSPECT SCHOOL – CAPACITY INCREASE (Pages 41 - 46)

To consider a report of the Director of Children's Services seeking approval to publish public notices in relation to capacity increase at Prospect School.

5. SCHOOL TERM AND HOLIDAY DATES FOR 2020/21 (Pages 47 - 52)

To consider a report of the Director of Children's Services regarding the school term and holiday dates for 2020/21

ABOUT THIS AGENDA:

On request, this agenda can be provided in alternative versions (such as large print, Braille or audio) and in alternative languages.

ABOUT THIS MEETING:

The press and public are welcome to attend the public sessions of the meeting. If you have any particular requirements, for example if you require wheelchair access, please contact members.services@hants.gov.uk for assistance.

County Councillors attending as appointed members of this Committee or by virtue of Standing Order 18.5; or with the concurrence of the Chairman in connection with their duties as members of the Council or as a local County Councillor qualify for travelling expenses.

HAMPSHIRE COUNTY COUNCIL

Decision Report

Decision Maker:	Executive Member for Education and Skills, Human Resources and Performance
Date:	27 March 2019
Title:	King's Furlong Infant School Nursery
Report From:	Director of Culture, Communities and Business Services

Contact names: Steve Clow and Bob Wallbridge

Tel: 01962 847858

01962 847894

Email: steve.clow@hants.gov.uk

bob.wallbridge@hants.gov.uk

1. Recommendations

- 1.1 That the Executive Member for Education and Skills, Human Resources and Performance gives approval to the project proposals for the permanent expansion of King's Furlong Infant School Nursery at an estimated total cost of £1,250,000
- 1.2 That the Executive Member for Education and Skills, Human Resources and Performance grants spend approval for contracting activity associated with the project.

2. Executive Summary

- 2.1 This report seeks approval to the project proposals for the permanent expansion of King's Furlong Infant School Nursery in Basingstoke at an estimated cost of £1,250,000.
- 2.2 The purpose of this paper is also to obtain spend and procurement approval for contracting activity associated with the project, including associated external works.

3. Scope of Work

- 3.1 This project is required to provide a new nursery building to accommodate 42 pre-school children including 11 additional nursery places at the school.
- 3.2 The proposed works are for a new nursery building which includes a large playroom with associated coats, office, circulation areas and accessible

toilet provision together with new external canopies and play area.

4. Contextual Information

4.1 This additional provision of nursery places is due to an increase in nursery school age children in the local area. Hampshire County Council anticipates that this additional demand will continue and therefore is proposing to permanently enlarge the nursery to meet this need.

5. Finance

5.1 Capital Expenditure:

The Capital Expenditure has already been approved; the following tables outline the breakdown of its distribution across the project:

Capital Expenditure	Current Estimate £'000	Capital Programme £'000
Buildings	1,073	1,073
Fees	177	177
Total	1,250	1,250

5.2 Sources of Funding:

Financial Provision for Total Scheme	Buildings £'000	Fees £'000	Total Cost £'000
1. From Own Resources			
a) Capital Programme (as above)	1,073	177	1,250
Total	1,073	177	1,250

5.2.1 Building Cost:

Net Cost = £2,625 per m²
 Gross Cost = £4,722 per m²
 Cost Per Pupil Place = £18,987

5.2.2 Furniture & Equipment:

Included in the above figures is an allocation of approximately £51,308 for the provision of all loose furniture, fittings, equipment and I.T. (inclusive of fees).

5.2.3 School Balances:

The school has the following level of balances:

Published revenue balance as at 31 March 2018: £309,072.05

Devolved capital as at 31 March 2018: £30,116.07

5.3 Revenue Issues:

5.3.2 Overview of Revenue Implications:

	(a) Employees £'000	(b) Other £'000	(a+b) *Net Current Expenditure £'000	(c) Capital Charges £'000	(a + b + c) Total Net Expenditure £'000
Revenue Implications Additional + / Reductions	0	0	0	69	69

6. Details of site and existing Infrastructure

- 6.1 King's Furlong Infant and is located off Upper Chestnut Drive in Basingstoke, RG21 8YJ.
- 6.2 The existing Infant School was built in 1971 and is of SCOLA system built construction. A temporary building was added in 1989. In 2015 and 2017 further double temporary buildings were installed to accommodate additional numbers at both infant and junior schools. It is expected that over time these numbers will reduce to the point where the temporary classrooms can be removed.
- 6.3 The mains services and drainage infrastructure to the site will be sufficient to accommodate the project proposals.

7. Scope of the Project

- 7.1 The expansion works at King's Furlong Infant School Nursery consists of a total area of new building of 170m² and includes a large playroom, associated pupil toilets, coats, office, circulation areas and accessible visitors' toilet.
- 7.2 It is proposed that the works be procured through the Lot 3 of the Southern Modular Building Framework.

7.3 It is anticipated that works will commence on site during Summer 2019 and complete during Spring 2020.

8. The Proposed Buildings

8.1 The proposed new nursery is a single storey building with brick elevations and a high performance roof. It has been designed to complement the scale of the existing Infant School building. It is located adjacent to the infant assembly/dining hall for ease of access.

8.2 No deliveries or movements of construction vehicles will take place at the start or end of the school day, in order to avoid traffic conflict when pupils are arriving at or departing from the school.

8.3 The school site will remain in use during the construction period and local management arrangements will be put in place to manage the health and safety impact to all users

9. External Works

9.1 The external works will include:

- A new children's external play area of 240m² which is partial covered with a canopy connecting the new nursery building to the existing infant school.
- An accessible parking bay and adjusted turning head for vehicular use.

10. Planning

10.1 Planning approval for the original scheme was granted in June 2016. Following consultation with the HCC Planning Officer it has been agreed in principle that the revised scheme will be considered a material amendment and a new application will not therefore be required. A public consultation event was undertaken on Monday 10 December 2018.

11. Building Management

11.1. The existing building management arrangements will remain in place.

12. Professional Resources

Architectural	- Culture, Communities & Business Services
Landscape	- Culture, Communities & Business Services
Mechanical & Electrical	- Culture, Communities & Business Services
Structural Engineering	- Culture, Communities & Business Services
Quantity Surveying	- Culture, Communities & Business Services
Health and Safety	- Culture, Communities & Business Services
Drainage and Highway	- Economy Transport and Environment

13. Consultations

13.1. The following have been consulted during the development of this project and feedback can be seen in overview in Appendix C:

- Headteacher
- School Governors
- Children's Services
- Local County Councillor
- Local Borough Councillors
- Local Residents
- Fire Officer
- Access Officer
- Planning Department
- Archaeology Team
- Ecology Officer
- Highways Department
- Geotechnical Department
- Arboriculturalist

14. Risk & Impact Issues

14.1. Please see Appendix B for a summary of the risk and impact issues considered in relation to the design of this project.

CORPORATE OR LEGAL INFORMATION:

Links to the Strategic Plan

Hampshire maintains strong and sustainable economic growth and prosperity:	Yes
People in Hampshire live safe, healthy and independent lives:	Yes
People in Hampshire enjoy a rich and diverse environment:	Yes
People in Hampshire enjoy being part of strong, inclusive communities:	Yes

Other Significant Links

Links to previous Member decisions:		
<u>Title</u>	<u>Reference</u>	<u>Date</u>
Direct links to specific legislation or Government Directives		
<u>Title</u>	<u>Date</u>	

Section 100 D - Local Government Act 1972 - background documents

The following documents discuss facts or matters on which this report, or an important part of it, is based and have been relied upon to a material extent in the preparation of this report. (NB: the list excludes published works and any documents which disclose exempt or confidential information as defined in the Act.)

Document

Location

None

RISK & COMBINED IMPACT ASSESSMENT:

1. Equality Duty

1.1 The County Council has a duty under Section 149 of the Equality Act 2010 ('the Act') to have due regard in the exercise of its functions to the need to:

- Eliminate discrimination, harassment and victimisation and any other conduct prohibited under the Act;
- Advance equality of opportunity between persons who share a relevant protected characteristic (age, disability, gender reassignment, pregnancy and maternity, race, religion or belief, gender and sexual orientation) and those who do not share it;
- Foster good relations between persons who share a relevant protected characteristic and persons who do not share it.

Due regard in this context involves having due regard in particular to:

- a) The need to remove or minimise disadvantages suffered by persons sharing a relevant characteristic connected to that characteristic;
- b) Take steps to meet the needs of persons sharing a relevant protected characteristic different from the needs of persons who do not share it;
- c) Encourage persons sharing a relevant protected characteristic to participate in public life or in any other activity which participation by such persons is disproportionately low.

1.2 Equality Impact Assessment

Please see below

2. Crime Prevention Issues:

2.1 The County Council has a legal obligation under Section 17 of the Crime and Disorder Act 1998 to consider the impact of all the decisions it makes on the prevention of crime and disorder in the County. The proposals in this report have no impact on the prevention of crime.

3. Fire Risk Assessment

3.1 Sprinkler systems shall be installed in new and refurbished buildings where appropriate, based upon a risk assessment methodology.

3.2 With respect to fire safety and property protection, the proposals have been risk assessed in line with the agreed Property Services procedures, and confirmed that the provision of sprinklers is not required in this instance.

- 3.3 The proposals will meet the requirements of the Building Regulations (BB100 Fire Safety in Schools), including enhancements beyond minimum provision, and are consistent with current fire safety legislation, the partnership arrangement with Hampshire Fire and Rescue Services, and are in line with the County Council's policy to manage corporate risk.
- 3.4 The project proposals include the following fire safety and enhanced features:
- Connection to the existing fire alarm system
 - External finishes specified as fire resistant.

4. Health and Safety

- 4.1 Design risk assessments, pre-construction health & safety information and a Health & Safety File will be produced and initiated in accordance with the Construction Design and Management Regulations for the proposed scheme.

5. Climate Change:

- 5.1 The project will incorporate the following sustainability features:
- A highly insulated building envelope for the extension including high performance windows, doors and roof lights to reduce energy consumption.
 - Energy efficient lighting and heating controls
 - Provision of good levels of day lighting to all teaching areas to reduce the need for artificial lighting and energy use.
 - The use of timber from sustainable sources.
 - A site waste management plan will be developed to ensure that during construction the principles of minimising waste are maintained.
 - External lighting to provide safe access and emergency escape routes that will be carefully designed to prevent light pollution to avoid nuisance to residential properties.
 - Low water-consumption sanitary installations.

Equality Impact Assessment



Hampshire
County Council

Kings Furlong Infant School and Nursery – Nursery expansion

Accountable officer: Glenn Parkinson

Email address: lily.corner@hants.gov.uk

Department: Children's Services

Date of
assessment: 20/02/2019

Description of current service/policy

Kings Furlong Infant School and Nursery currently offers 31 nursery places to children aged 2+ years.

Geographical impact: Basingstoke &
Deane

Description of proposed change

Hampshire County Council anticipates an increase in demand for nursery places in the area of Basingstoke and therefore is proposing to permanently enlarge the nursery to meet this need.

Hampshire County Council is proposing to expand the nursery at Kings Furlong Infant and Nursery from 30 places to 42 places in permanent accommodation.

Impacts of the proposed change

This impact assessment covers Service users

Engagement and consultation

Has engagement or consultation been carried out? Yes

The following have been consulted during the development of this project:

FEEDBACK FROM CONSULTEES:**OTHER EXECUTIVE MEMBERS:**

Executive Member & Portfolio	Reason for Consultation	Date Consulted	Response:
Councillor Stephen Reid, Executive Lead Member for Education and Skills, Human Resources and Performance	Portfolio Holder		

OTHER FORMAL CONSULTEES:

Member/ Councillor	Reason for Consultation	Date Consulted	Response:
Councillor Michael Westbrook Basingstoke Central	Public Consultations	10/12/18	<p>I would firstly like to thank the officers for their time in showing the plans and discussing them at the drop-in session on the 10th December 2018.</p> <p>I am happy with the proposed enlargement which will allow nursery provision at Kings Furlong Infant School and Nursery to offer 42 places (age 2-4 years) to meet demand.</p> <p>I am also pleased with the design, including the size (smaller footprint than the previous proposals). I liked the idea of the link via a playground to the infant's hall, allowing for the nursery children to eat in the infant's hall encouraging early interaction.</p> <p>I welcome the plans in relation to the building works and am pleased</p>

			<p>to see that proposals include a start date to coincide with the summer holiday period of 2019, this will help mitigate some of the issues associated with regular school deliveries being diverted onto Lower Chestnut Drive, at least for that period.</p> <p>I am fully supportive of the proposals.</p>
--	--	--	---------------------------------------------------------------------------------------------------------------------------------------------------------------------------------------------------------------------------------------------------------------------------------------------------------------

This page is intentionally left blank

Property Services
Kings Furlong Infant School and Nursery
Basingstoke

42 Place Nursery

Key:

Existing Site Location Plan:

- A Existing Kings Furlong Infant School
- B Existing Kings Furlong Junior School
- C Existing Temporary Classrooms and Nursery
- D Proposed Nursery Building

Proposed Site Plan:

- 1 Existing Infant School
- 2 Existing Junior School
- 3 Existing Temporary Nursery
- 4 Existing Temporary Nursery Play area
- 5 Existing Temporary Classrooms
- 6 Existing Car Park
- 7 Existing Hard Play
- 8 Existing Soft Play
- 9 Proposed Nursery Building
- 10 Proposed Nursery External Play
- 11 Proposed resurfaced Junior School hard play area
- 12 Proposed regraded banking

- N
- New Build Nursery
- School Site Boundary
- Extent of works
- Pedestrian Access
- Vehicular Access
- Contractor Access

© Crown Copyright and database rights 2018. All rights reserved. HCC 100019180.

Project Appraisal

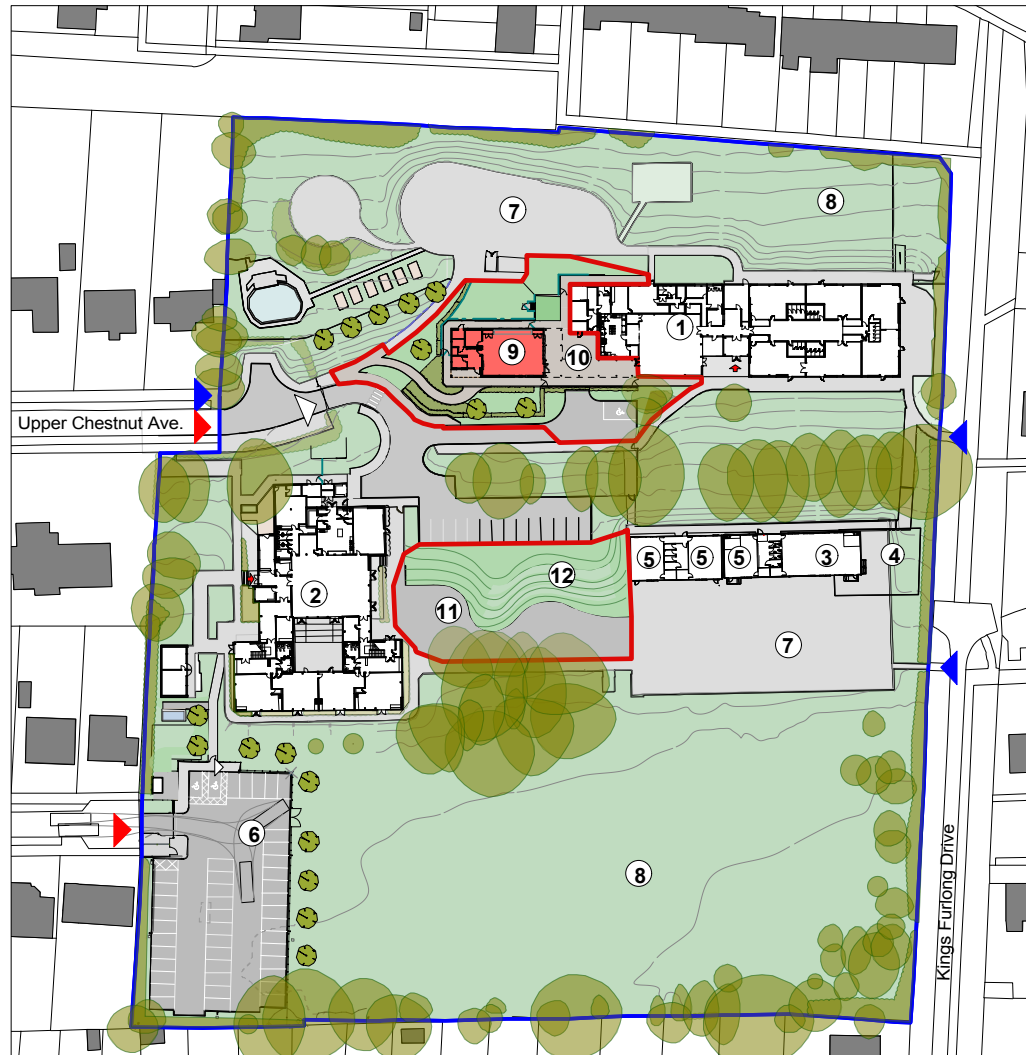
Not to Scale

P12060-HCC-XX-DR-A-1700

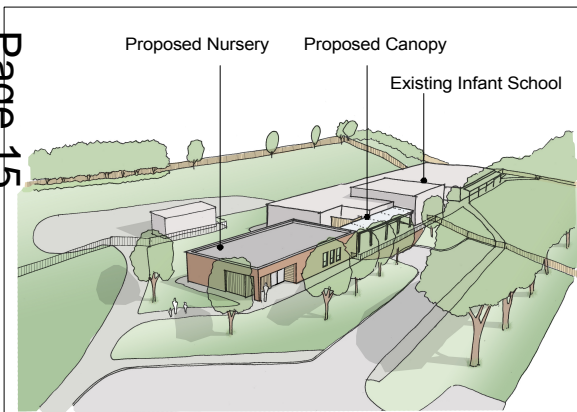
March 2019



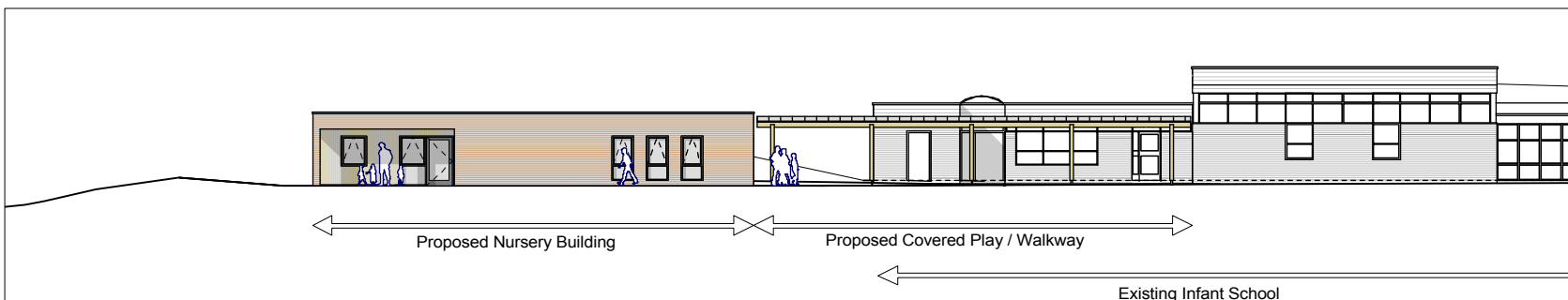
Site Location Plan



Proposed Site Plan



Proposed Aerial View Looking North



Proposed Nursery - South East Elevation

This page is intentionally left blank

HAMPSHIRE COUNTY COUNCIL

Decision Report

Decision Maker:	Executive Member for Education and Skills, Human Resources and Performance
Date:	27 March 2019
Title:	Norman Gate School Internal Alterations
Report From:	Director of Culture, Communities and Business Services

Contact names: Steve Clow and Bob Wallbridge

Tel: 01962 847858
01962 847894

Email: steve.clow@hants.gov.uk
bob.wallbridge@hants.gov.uk

1. Recommendations

- 1.1. That the Executive Member for Education and Skills, Human Resources and Performance gives approval to the project proposals for the internal alterations at Norman Gate School for pupils with Special Education Needs (SEND), at an estimated total cost of £600,000.
- 1.2. That the Executive Member for Education and Skills, Human Resources and Performance grants spend approval for contracting activity associated with the project as outlined in Section 5.2 of this report.

2. Executive Summary

- 2.1 This report seeks approval to the project proposals for the internal alterations of Norman Gate School in Andover, at an estimated total cost of £600,000.
- 2.2 The purpose of this paper is also to obtain spend approval for contracting activity associated with the project.

3. Scope of Work

- 3.1 The proposals are to undertake work to reconfigure the existing school building and provide remodelled accommodation that will increase the school's capacity from 75 pupils to 93 pupils (an increase of 18 Special Education Needs (SEND) pupil places). This is as a result of rising demand in the area for pupils requiring appropriate support and learning.
- 3.2 The proposed works will create the provision of two new classrooms, breakout, meeting and sensory areas together with refurbishment of existing classrooms and existing offices and circulation areas.

4. Contextual Information

- 4.1. Norman Gate is a special school for 2-11 year olds with moderate learning difficulties and autistic spectrum disorder in Andover, Hampshire.
- 4.2. The project is required to provide additional accommodation in response to increased pupil numbers and new housing development in the local area.
- 4.3. Capital funding for the project was approved at the Executive Lead Member for Children's Services Decision Day on 17 January 2019 and this report outlines the available budget from within which the project must be designed and delivered.

5. Finance

5.1. Capital Expenditure:

The Capital Expenditure has already been approved; the following tables outline the breakdown of its distribution across the project:

Capital Expenditure	Current Estimate £'000	Capital Programme £'000
Buildings	516	516
Fees	84	84
Total	600	600

5.2. Sources of Funding:

Financial Provision for Total Scheme	Buildings £'000	Fees £'000	Total Cost £'000
1. From Own Resources			
a) Capital Programme (as above)	516	84	600
2. From Other Resources			
Total	516	84	600

a) Building Cost:

Net Cost = Not applicable as this is a refurbishment project
 Gross Cost = £1,115/M²
 Cost Per Pupil Place = £25,899

b) Furniture & Equipment:

Included in the above figures is an allocation of approximately £57,600 for the provision of all loose furniture, fittings, equipment and I.T. (inclusive of fees).

c) *School Balances:*

The school has the following level of balances:

Published revenue balance as at 31 March 2018: £154,805.54

Devolved capital as at 31 March 2018: £23,621.36

5.3. Revenue Issues:

a) *Overview of Revenue Implications:*

	(a) Employees £'000	(b) Other £'000	(a+b) *Net Current Expenditure £'000	(c) Capital Charges £'000	(a + b + c) Total Net Expenditure £'000
Revenue Implications Additional + / Reductions	0	0	0	33	33

6. Details of site and existing infrastructure

- 6.1. Norman Gate School is located off Vigo Road, Andover, and shares a site with Vigo Primary School.
- 6.2. Norman Gate School was built in 1970 and the existing building is single storey. The original building is of SCOLA system build construction with masonry and insulated panels together with painted metal windows. The school was last extended in 2010.
- 6.3. The existing mains services and drainage infrastructure at the site will be sufficient to accommodate the project proposals.

7. Scope of the Project

- 7.1. The works at Norman Gate School will include:
 - The provision of two new classroom spaces.
 - Two new WC and an accessible WC
 - Several new breakout and sensory areas.
 - A new changing room (2 beds).
 - New meeting room and office spaces.

- Refurbishment and remodelling of classrooms, breakout areas and office and circulation areas.
 - Remodelling of existing blockwork garage to provide a meeting space.
- 7.2. It is proposed that the works be procured through the Hampshire Minor Works Building Framework.
- 7.3. It is anticipated that works will commence on site during Spring 2019 and complete during the 2019 Autumn term.

8. The Proposed Building

- 8.1. The remodelling of the existing buildings is to provide an additional two classrooms, associated breakout spaces and a new meeting room. The areas will be fully refurbished, with new ceilings, floor coverings, lighting and decoration.
- 8.2. It is proposed that the contractor will access the school site by the main school vehicular entrance off Vigo Road. The contractor's compound will be located within the existing staff car park.
- 8.3. No deliveries or movements of vehicles will take place at the start or end of the school day, in order to avoid traffic conflict when pupils are arriving at or departing from the Norman Gate and the Vigo Schools.
- 8.4. The school site will remain in use during the refurbishment period and local management arrangements will be put in place to manage the health and safety impact to all users.

9. External Works

- 9.1. The Norman Gate School site is shared with Vigo Primary School. The schools are segregated by appropriate fencing. The schools share the main access road, the existing car park will continue to be used by the school and will be segregated from the contractor compound and parking.
- 9.2. There are currently 44 car parking spaces on site; this is in line with the Hampshire County Council On-Site School Parking Policy. No additional parking spaces are needed to meet the extended school's capacity.

10. Planning

- 10.1. A planning application is not required for these works as there is no impact on the external appearance of the building.

11. Building Management

- 11.1. The existing building management arrangements will remain in place.

12. Professional Resources

Architectural	- Culture, Communities & Business Services
Landscape	- Culture, Communities & Business Services
Mechanical & Electrical	- Culture, Communities & Business Services
Structural Engineering	- Culture, Communities & Business Services

Quantity Surveying	- Culture, Communities & Business Services
Principal Designer	- Culture, Communities & Business Services
Drainage	- Economy, Transport and Environment

13. Consultations

13.1. The following have been consulted during the development of this project and feedback can be seen in overview in Appendix C:

Headteacher
School Governors
Children's Services
Executive Lead Member for Children's Services
Local County Councillor
Local Residents
Fire Officer
Access Officer
Planning Department

14. Risk & Impact Issues

14.1. Please see Appendix B for a summary of the risk and impact issues considered in relation to the design of this project.

CORPORATE OR LEGAL INFORMATION:**Links to the Strategic Plan**

Hampshire maintains strong and sustainable economic growth and prosperity:	Yes
People in Hampshire live safe, healthy and independent lives:	Yes
People in Hampshire enjoy a rich and diverse environment:	Yes
People in Hampshire enjoy being part of strong, inclusive communities:	Yes

Other Significant Links

Links to previous Member decisions:		
<u>Title</u>	<u>Reference</u>	<u>Date</u>
Direct links to specific legislation or Government Directives		
<u>Title</u>	<u>Date</u>	

Section 100 D - Local Government Act 1972 - background documents

The following documents discuss facts or matters on which this report, or an important part of it, is based and have been relied upon to a material extent in the preparation of this report. (NB: the list excludes published works and any documents which disclose exempt or confidential information as defined in the Act.)

DocumentLocation

None

RISK & COMBINED IMPACT ASSESSMENT:

1. Equality Duty

1.1 The County Council has a duty under Section 149 of the Equality Act 2010 ('the Act') to have due regard in the exercise of its functions to the need to:

- Eliminate discrimination, harassment and victimisation and any other conduct prohibited under the Act;
- Advance equality of opportunity between persons who share a relevant protected characteristic (age, disability, gender reassignment, pregnancy and maternity, race, religion or belief, gender and sexual orientation) and those who do not share it;
- Foster good relations between persons who share a relevant protected characteristic and persons who do not share it.

Due regard in this context involves having due regard in particular to:

- a) The need to remove or minimise disadvantages suffered by persons sharing a relevant characteristic connected to that characteristic;
- b) Take steps to meet the needs of persons sharing a relevant protected characteristic different from the needs of persons who do not share it;
- c) Encourage persons sharing a relevant protected characteristic to participate in public life or in any other activity which participation by such persons is disproportionately low.

1.2 Equality Impact Assessment – Please see below.

2. Crime Prevention Issues:

2.1 The County Council has a legal obligation under Section 17 of the Crime and Disorder Act 1998 to consider the impact of all the decisions it makes on the prevention of crime and disorder in the County. The proposals in this report have no impact on the prevention of crime.

3. Fire Risk Assessment

3.1 Sprinkler systems shall be installed in new and refurbished buildings where appropriate, based upon a risk assessment methodology.

3.2 With respect to fire safety and property protection, the proposals have been risk assessed in line with the agreed Property Services procedures, and confirmed that the provision of sprinklers is not required in this instance.

3.3 The proposals will meet the requirements of the Building Regulations (BB100 Fire Safety in Schools), including enhancements beyond minimum provision, and are consistent with current fire safety legislation, the partnership

arrangement with Hampshire Fire and Rescue Services, and are in line with the County Council's policy to manage corporate risk.

3.4 The project proposals include the following fire safety and enhanced features:

Additional automatic fire protection, with full (24/7) remote monitoring.

External finishes specified as fire resistant.

Reduced fire compartment sizes.

Consideration of secure by design principles including specific site security, bin storage away from building, external lighting etc.

4. Health and Safety

4.1 Design risk assessments, pre-construction health & safety information and a Health & Safety File will be produced and initiated in accordance with the Construction Design and Management Regulations for the proposed scheme.

5. Climate Change:

5.1 The project will incorporate the following sustainability features:

High performance windows, doors and roof lights to reduce energy consumption.

A site waste management plan will be developed to ensure that during construction the principles of minimising waste are maintained.

Energy efficient lighting and heating controls, as each light fitting will be day-light linked with absence detection to ensure the minimum energy is used.

External lighting to provide safe access and emergency escape routes that will be carefully designed to prevent light pollution.

Low water-consumption sanitary installations.

Natural ventilation to main spaces.

Provision of good levels of day lighting to all teaching areas to reduce the need for artificial lighting and energy use.

Solar controlled glass will be installed to south facing windows to assist in the control of solar gain.

The use of timber from sustainable sources.

Equality Impact Assessment



Hampshire
County Council

Norman Gate School – capacity increase

Accountable officer: Troy Hobbs

Email address: lily.corner@hants.gov.uk

Department: Children's Services

Date of assessment: 04/03/2019

Description of current service/policy

Norman Gate School is currently a 75 place special school for 2-11 year olds with moderate learning difficulties and Autistic Spectrum Disorder.

Hampshire County Council is committed to expanding successful provision where possible to meet demand. Currently there is an increased need to provide support for pupils with moderate learning difficulties and Autistic Spectrum Disorder in the Andover area.

Geographical impact: Test Valley

Description of proposed change

The County Council is proposing to increase the capacity of the school by adding an additional 18 places through a phased increase over the coming 2-3 years. This will give a final overall capacity of 93 places at Norman Gate School.

To accommodate the increased number of places, it is proposed that existing spaces on site at Norman Gate School will be converted into teaching accommodation to enable more children to attend.

Impacts of the proposed change

This impact assessment covers Service users

Engagement and consultation

FEEDBACK FROM CONSULTEES:**OTHER EXECUTIVE MEMBERS:**

Executive Member & Portfolio	Reason for Consultation	Date Consulted	Response:
Councillor Keith Mans, Executive Lead Member for Children's Services	Portfolio Holder		

OTHER FORMAL CONSULTEES:

Member/ Councillor	Reason for Consultation	Date Consulted	Response:
Councillor North	Local Member for Andover North		

**Norman Gate School
Andover
Internal Alterations
Proposed Site & Building
Plans**

Key:

- A Norman Gate School
- B Vigo Infant and Junior Schools

Proposed Site Plan:

- 1 Proposed new classroom spaces
- 2 Proposed new breakout spaces
- 3 Proposed new accessible changing/WC
- 4 Proposed new sensory space
- 5 Proposed new meeting space
- 6 Proposed new PPA space
- 7 Proposed new outreach space
- 8 Proposed new office space
- 9 Existing car parking
- 10 Proposed storage
- 11 Proposed new level access
- 12 Existing kitchen area
- 13 Existing hard play area
- 14 Existing soft play area

- Teaching - New Build - N/A
- Teaching - Refurbishment.
- Non-Teaching - New Build - N/A
- Non-Teaching - Refurbishment.
- Refurbishment to Circulation
- Site Boundary
- Contractor Compound and Parking
- ▶ Pedestrian Access
- ▶ Vehicular Access
- ◁ Contractor Access

© Crown Copyright and database rights
2019. All rights reserved. HCC
100019180.

Project Appraisal

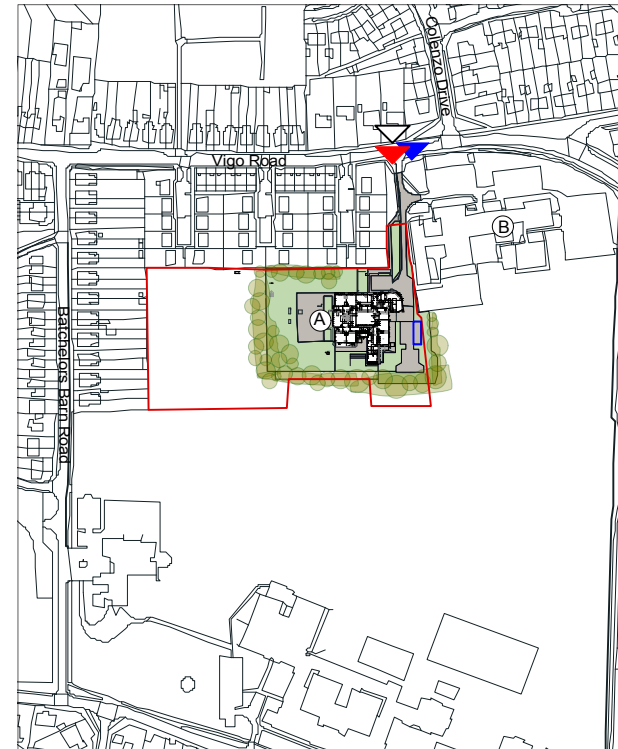
Not to Scale

P11938 - A.100_Rev -

February 2019



Proposed Site Ground Floor Plan



Existing Site Location Plan

This page is intentionally left blank

HAMPSHIRE COUNTY COUNCIL

Decision Report

Decision Maker:	Executive Member for Education and Skills, Human Resources and Performance
Date:	27 March 2019
Title:	Expansion of Prospect School
Report From:	Director of Culture, Communities and Business Services

Contact names: Steve Clow and Bob Wallbridge

Tel: 01962 847858 **Email:** steve.clow@hants.gov.uk
01962 847894 bob.wallbridge@hants.gov.uk

1. Recommendations

- 1.1. That the Executive Member for Education and Skills, Human Resources and Performance gives approval to the project proposals for the classrooms expansion at Prospect Special Education Needs (SEND) School, at an estimated total cost of £800,000.
- 1.2. That the Executive Member for Education and Skills, Human Resources and Performance grants spend approval for the project as outlined in Section 5.2 of this report.

2. Executive Summary

- 2.1 This report seeks approval to the project proposals for the permanent expansion of Prospect SEND School at an estimated total cost of £800,000.
- 2.2 The purpose of this paper is also to obtain spend approval for contracting activity associated with the project.

3. Scope of Work

- 3.1 Prospect School is a special school for boys aged 11 to 16 who have social, emotional and mental health (SEMH) difficulties. It is proposed to construct three additional classrooms within the existing first floor roof space to increase the school's capacity from 62 to 80 pupils. The building was designed to incorporate expansion into the roof space at a later date.
- 3.2 It is also proposed to provide additional administration accommodation on the first floor above the main school entrance block.

4. Contextual Information

- 4.1 The current school's Agreed Pupil Number (APN) is 62 and there are currently 64 pupils on roll. This project is required to provide 18 additional pupil places at the school arising in response to increased pupil numbers with SEND in the local area.
- 4.2 Capital Funding for the project was approved at the Executive Lead Member for Children's Services Decision Day on 17 January 2019 and this report outlines the available budget from within which the project must be designed and delivered.

5 Finance

5.1 Capital Expenditure:

The Capital Expenditure has already been approved; the following tables outline the breakdown of its distribution across the project:

Capital Expenditure	Current Estimate £'000	Capital Programme £'000
Buildings	687	687
Fees	113	113
Total	800	800

The means by which the difference between the Current Estimate and the Capital Programme allocation is to be met are shown in the table below:

5.2 Sources of Funding:

Financial Provision for Total Scheme	Buildings £'000	Fees £'000	Total Cost £'000
1. From Own Resources			
a) Capital Programme (as above)	687	113	800
2. From Other Resources			
Total	687	113	800

5.2.1 Building Cost:

Net Cost = Not applicable as this is a refurbishment project
 Gross Cost = £2,571
 Cost Per Pupil Place = £33,186

5.2.2 Furniture & Equipment:

Included in the above figures is an allocation of £105,000 for the provision of all loose furniture, fittings, equipment and I.T. (inclusive of fees).

5.2.3 School Balances:

The school has the following level of balances:

Published revenue balance as at 31 March 2018: £39,684.47

Devolved capital as at 31 March 2018: £12,356.91

5.3 Revenue Issues:

5.3.1 Overview of Revenue Implications:

	(a) Employees £'000	(b) Other £'000	(a+b) *Net Current Expenditure £'000	(c) Capital Charges £'000	(a + b + c) Total Net Expenditure £'000
Revenue Implications Additional + / Reductions	0	0	0	44	44

6 Details of site and existing Infrastructure

- 6.1 Prospect School is located off Freeley Road, Leigh Park, Havant.
- 6.2 Prospect School was built in 2007. The school is made up of a series of linked teaching buildings and other accommodation arranged around a secure courtyard connected with a traditional steeply pitched roof.
- 6.3 The existing building is constructed of a steel frame with brick cladding and double glazed metal windows. The pitched roofs are clad with plain clay tiles.
- 6.4 The secure courtyard provides an external teaching resource and informal social space. The circulation between teaching blocks and the other school accommodation is via the courtyard.
- 6.5 The wider site includes a drop-off and pick up zone to the front of the school, a staff car-park, a sports pitch and hard and soft play areas.
- 6.6 The existing mains services and drainage infrastructure at the site will be sufficient to accommodate the project proposals.

7 Scope of the Project

- 7.1 The expansion works at Prospect School will include:

- Three additional classrooms on the first floor roof space above the existing specialist practical spaces
 - Additional office and administration accommodation space above existing entrance block
 - Additional 3 car parking spaces
- 7.2 It is proposed that the works be procured through either the Minor Works or Intermediate Construction Framework depending which is the best option for achieving value for money..
- 7.3 It is anticipated that works will commence on site during early summer 2019 and complete during autumn 2019.

8 The Proposed Building

- 8.1 The existing school will be expanded into the first floor roof space above the specialist practical teaching block by forming two new stairs within existing store rooms directly accessed from the courtyard. The space will be fully refurbished with new mechanical and electrical services, new ceilings, new floor coverings and decoration.
- 8.2 The three new classrooms will have north facing rooflights constructed within the existing roof structure, and facing on to the courtyard, to provide a good quality of natural daylight and ventilation.
- 8.3 The additional office and administration space will be accessed via a new stair core in the location of an existing store and accessible wc within the school's existing reception area. The accessible wc will be re-provided elsewhere.
- 8.4 An additional three car parking spaces will be provided to the existing staff car park.
- 8.5 It is proposed that the contractor will access the school site by the main school entrance off Freeley Road. The contractor's compound will be located adjacent to the existing staff car park with secure access to the new stair cores within the courtyard .
- 8.6 No deliveries or movements of vehicles will take place at the start or end of the school day, in order to avoid traffic conflict when pupils are arriving at or departing from the school.
- 8.7 The school site will remain in use during the construction period and local management arrangements will be put in place to manage the health and safety impact to all users.

9 External Works

- 9.1 The project will provide additional car parking on the school site which will be in line with the Hampshire County Council On-Site School Parking. There will be three additional car parking spaces provided for staff and visitors, one of which will be fully accessible. No other external works are planned other than the making good of any damaged caused within the construction period.

10 Planning

10.1 The proposed works are considered permitted development and therefore planning approval is not required.

11 Building Management

11.1 The existing building management arrangements will remain in place.

12 Professional Resources

Architectural	- Culture, Communities & Business Services
Landscape	- Culture, Communities & Business Services
Mechanical & Electrical	- Culture, Communities & Business Services
Structural Engineering	- Culture, Communities & Business Services
Quantity Surveying	- Culture, Communities & Business Services
Principal Designer	- Culture, Communities & Business Services

13 Consultations

13.1 The following have been consulted during the development of this project and feedback can be seen in overview in Appendix C:

Headteacher
Children's Services
Executive Lead Member for Children's Services
Local member
Fire Officer
Access Officer
Planning Department

14 Risk & Impact Issues

14.1 Please see Appendix B for a summary of the risk and impact issues considered in relation to the design of this project.

CORPORATE OR LEGAL INFORMATION:**Links to the Strategic Plan**

Hampshire maintains strong and sustainable economic growth and prosperity:	Yes
People in Hampshire live safe, healthy and independent lives:	Yes
People in Hampshire enjoy a rich and diverse environment:	Yes
People in Hampshire enjoy being part of strong, inclusive communities:	Yes

Other Significant Links

Links to previous Member decisions:		
<u>Title</u>	<u>Reference</u>	<u>Date</u>
Direct links to specific legislation or Government Directives		
<u>Title</u>	<u>Date</u>	

Section 100 D - Local Government Act 1972 - background documents

The following documents discuss facts or matters on which this report, or an important part of it, is based and have been relied upon to a material extent in the preparation of this report. (NB: the list excludes published works and any documents which disclose exempt or confidential information as defined in the Act.)

DocumentLocation

None

RISK & COMBINED IMPACT ASSESSMENT:

1. Equality Duty

1.1 The County Council has a duty under Section 149 of the Equality Act 2010 ('the Act') to have due regard in the exercise of its functions to the need to:

- Eliminate discrimination, harassment and victimisation and any other conduct prohibited under the Act;
- Advance equality of opportunity between persons who share a relevant protected characteristic (age, disability, gender reassignment, pregnancy and maternity, race, religion or belief, gender and sexual orientation) and those who do not share it;
- Foster good relations between persons who share a relevant protected characteristic and persons who do not share it.

Due regard in this context involves having due regard in particular to:

- a) The need to remove or minimise disadvantages suffered by persons sharing a relevant characteristic connected to that characteristic;
- b) Take steps to meet the needs of persons sharing a relevant protected characteristic different from the needs of persons who do not share it;
- c) Encourage persons sharing a relevant protected characteristic to participate in public life or in any other activity which participation by such persons is disproportionately low.

1.2 Equality Impact Assessment – Please see below

2. Crime Prevention Issues:

2.1 The County Council has a legal obligation under Section 17 of the Crime and Disorder Act 1998 to consider the impact of all the decisions it makes on the prevention of crime and disorder in the County. The proposals in this report have no impact on the prevention of crime.

3. Fire Risk Assessment

3.1 With respect to fire safety and property protection, the proposals have been risk assessed in line with the agreed Property Services procedures, and confirmed that the provision of sprinklers are required in this instance. The original building is fitted with sprinklers so the system will be extended to the new accommodation.

3.2 The proposals will meet the requirements of the Building Regulations (BB100 Fire Safety in Schools), including enhancements beyond minimum provision, and are consistent with current fire safety legislation, the partnership arrangement with Hampshire Fire and Rescue Services, and are in line with the County Council's policy to manage corporate risk.

3.3 The project proposals include the following fire safety and enhanced features:

3.4 Extension of existing sprinkler system to serve new spaces.

Additional automatic fire protection, with full (24/7) remote monitoring.

External finishes specified as fire resistant.

Reduced fire compartment sizes.

Consideration of secure by design principles including specific site security, bin storage away from building, external lighting etc.

4. Health and Safety

4.1 Design risk assessments, pre-construction health & safety information and a Health & Safety File will be produced and initiated in accordance with the Construction Design and Management Regulations for the proposed scheme.

5. Climate Change:

5.1 The project will incorporate the following sustainability features:

High performance doors and roof lights to reduce energy consumption.

A site waste management plan will be developed to ensure that during construction the principles of minimising waste are maintained.

Energy efficient lighting and heating controls, as each light fitting will be day-light linked with absence detection to ensure the minimum energy is used.

External lighting to provide safe access and emergency escape routes that will be carefully designed to prevent light pollution to avoid nuisance to residential properties.

Low water-consumption sanitary installations.

Natural ventilation to main spaces.

Provision of good levels of day lighting to all teaching areas to reduce the need for artificial lighting and energy use.

The use of timber from sustainable sources.

FEEDBACK FROM CONSULTEES:**OTHER EXECUTIVE MEMBERS:**

Executive Member & Portfolio	Reason for Consultation	Date Consulted	Response:
Councillor Keith Mans, Executive Lead Member for Children's Services	Portfolio Holder		

OTHER FORMAL CONSULTEES:

Member/ Councillor	Reason for Consultation	Date Consulted	Response:
Councillor Fairhurst	Local Member for North West Havant		The Local Member was consulted and no response was received prior to despatch of the papers.

Equality Impact Assessment



Hampshire
County Council

Prospect School – Capacity increase

Accountable officer: Claire Campling

Email address: lily.corner@hants.gov.uk

Department: Children's Services

Date of assessment: 13/03/2019

Description of current service/policy

Prospect School is currently a 62 place special school for 11-16 year old boys with social, emotional and mental health difficulties.

Hampshire County Council is committed to expanding successful provision where possible to meet demand. Currently there is an increased need to provide support for boys with social, emotional and mental health difficulties in this area of the County. This proposal will provide much needed specialist educational capacity to meet this increased need.

Geographical impact: Havant

Description of proposed change

Hampshire County Council is proposing to increase the capacity of the school by adding an additional 18 places. This will give a final overall capacity of 80 places at Prospect School. To accommodate the increased number of places, it is proposed that existing spaces on site at Prospect School will be converted into teaching accommodation to enable more pupils to attend.

Impacts of the proposed change

This impact assessment covers Service users

Engagement and consultation

Has engagement or consultation been carried out? Yes

Property Services
Prospect School
Havant
School Expansion
Proposed Site & Building Plans

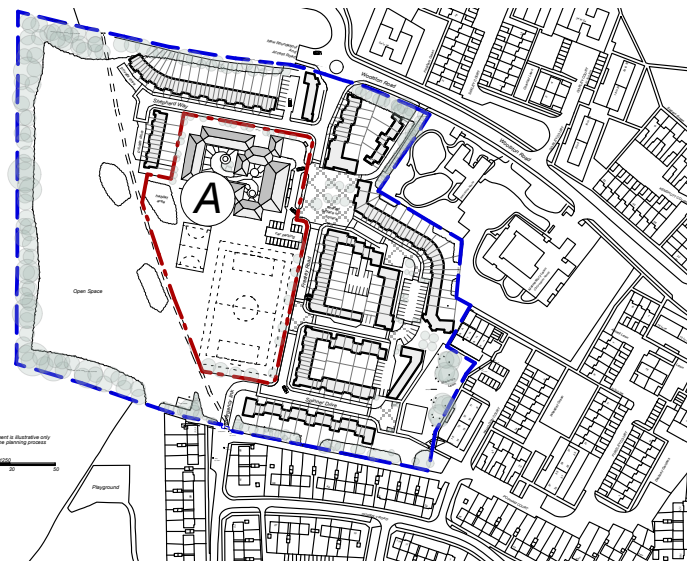
Key:
 a Prospect School

- | | | |
|--------------|-----|-----------------------------------|
| Non-Teaching | 1. | Reception & Waiting |
| | 2. | General Office |
| | 3. | Head Teacher |
| | 4. | Meeting Room |
| | 5. | Staff Room |
| | 6. | WCs |
| | 7. | Kitchen & Servery |
| | 8. | Plant & Non-teaching Stores |
| | 9. | Hall |
| Teaching | 10. | Classrooms - Reception |
| | 11. | Classrooms - Key Stage 3 |
| | 12. | Learning Resource / Library |
| | 13. | Specialist Practical |
| | 14. | Studio/ Small Hall/ Music & Drama |
| | 15. | Small Group Room (SEN) |
| | 16. | ICT Suite |
| External | 17. | Car Park |
| | 18. | Games Court |
| | 19. | Hard Play |
| | 20. | Soft Play |
| | 21. | Habitat |
| | 22. | Pitch |

- General Teaching - New Build
- General Teaching - Refurbishment.
- Non-Teaching - New Build
- Non-Teaching - Refurbishment.
- Circulation and Staircases
- Site Boundary
- Pedestrian Access
- Vehicular Access
- Contractor Access

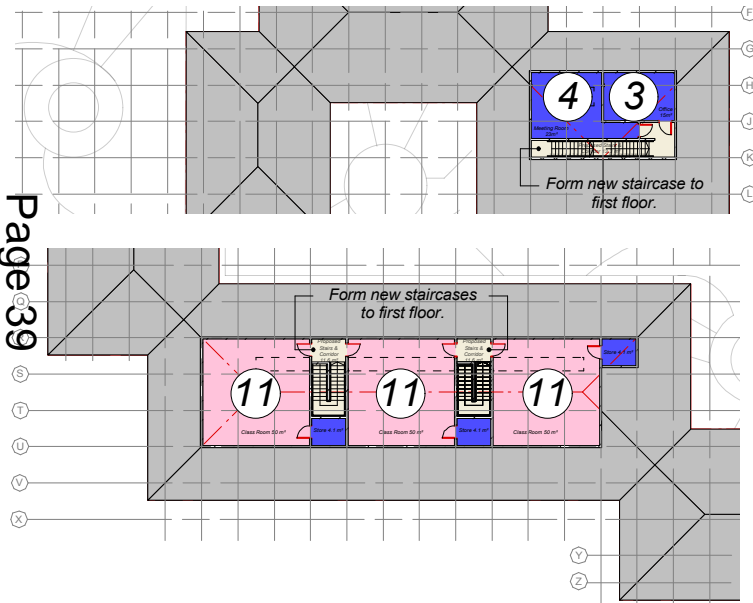
© Crown Copyright and database rights 2017. All rights reserved. HCC 100019180.

Project Appraisal
 Not to Scale
 P11799 - A.100_Rev -
 January 2019

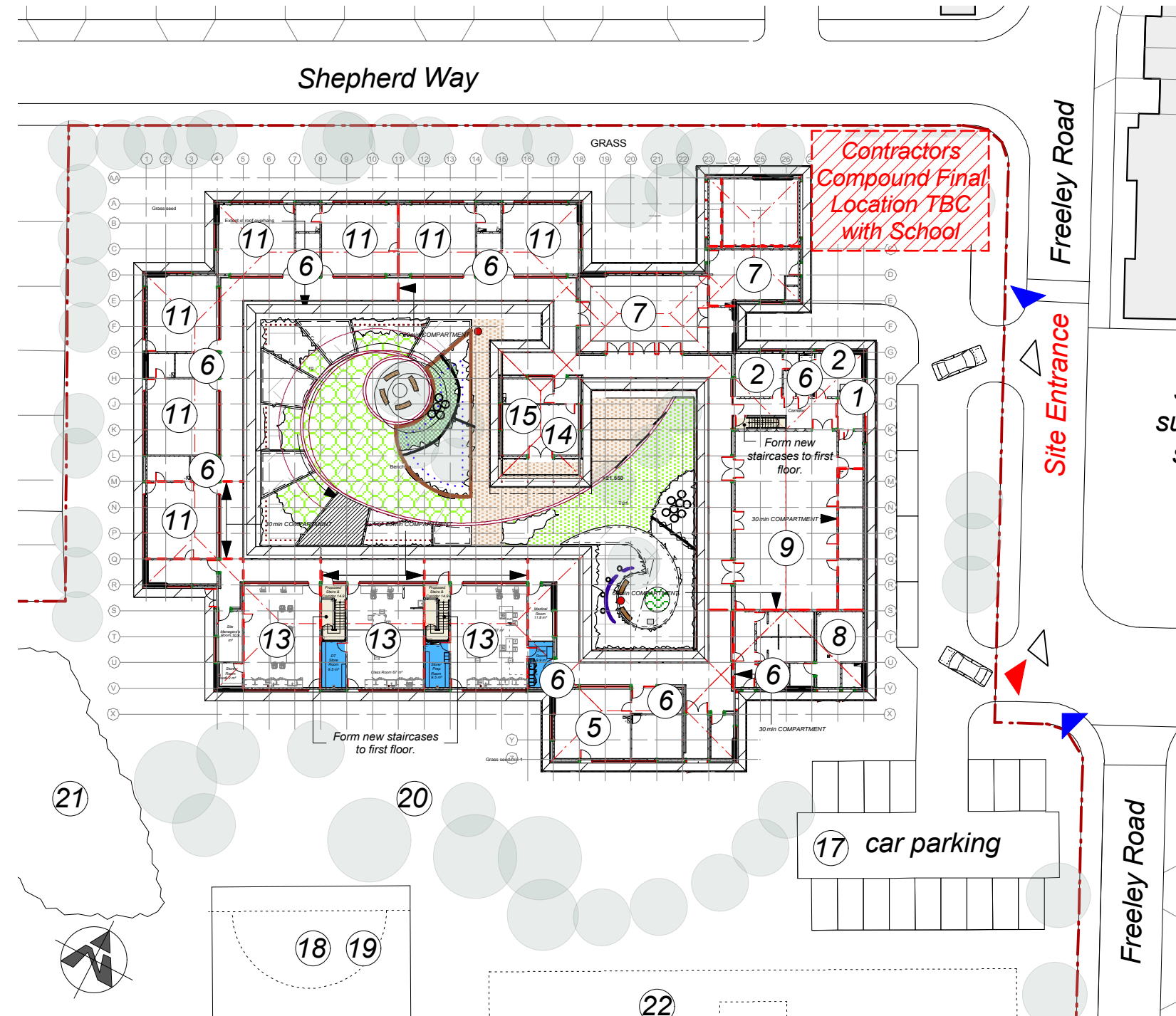


Existing Site Location Plan

Proposed First Floor Plan



Page 39



Proposed Site Plan Ground Floor Plan



Proposed South Elevation

This page is intentionally left blank

HAMPSHIRE COUNTY COUNCIL

Decision Report

Decision Maker	Executive Member for Education and Skills, Human Resources and Performance
Date:	27 March 2019
Title:	Prospect School – Capacity increase
Report From:	Director of Children’s Services

Contact name: Claire Campling

Tel: 01962 832206

Email: Claire.Campling@hants.gov.uk

Recommendation

1. That the Executive Member for Education and Skills, Human Resources and Performance approves that public notices be published, in accordance with Section 19 (1) of the Education and Inspections Act 2006, notifying of the approval to make prescribed alterations to PROSPECT SCHOOL, Freeley Road, Havant, Hampshire, **P09 4AQ** (category of schools – Special) by increasing the capacity of the school, with effect from 1 September 2019.

Executive Summary

2. The purpose of this paper is to report on the outcome of the formal public consultation regarding the proposal to increase the capacity of Prospect School by 18 places for pupils with complex social, emotional and mental health difficulties. This paper sets out the background to the consultation, discusses the responses and recommends that Public Notices be published to make this prescribed alteration.

Contextual information

3. Prospect School is currently a 62 place special school for 11-16 year old boys with social, emotional and mental health difficulties. The County Council is proposing to increase the capacity of the school by adding an additional 18 places. This will give a final overall capacity of 80 places at Prospect School.
4. Hampshire County Council is committed to expanding successful provision where possible to meet demand. Currently there is an increased need to provide support for boys with social, emotional and mental health difficulties in

this area of the county. This proposal will provide much needed specialist educational capacity to meet this increased need.

Finance

5. The capital cost of this project, £800,000, was included in the Children's Services Capital Programme report approved by Executive Lead Member for Children's Services on 17 January 2019. This funding provides 3 new classrooms, new administrative areas, 3 parking spaces and associated IT and equipment.

Consultation and Equalities

6. A formal consultation took place between 4 February and 4 March 2019. A letter was sent to consultees as detailed below and a consultation meeting was held at Prospect School on 25 February 2019. The proposal was also included on the County Council's consultation website.
7. A total of 8 written comments were received. 3 Objections, 3 responses expressing concerns, and 2 comments in support of the proposal. The key issues raised by consultees can be summarised as follows;
 - Staff parking – two comments highlighted insufficient parking as an issue. Additional on-site staff parking bays are being included supporting this project and hope to be implemented in 2019/20 academic year. It is appreciated that some staff do park on the surrounding roads which are public highway without parking restrictions. However the Headteacher is keen to work with local residents if there any recurring problems.
 - Antisocial behaviour of pupils – climbing of boundary fences was highlighted. The Council will be increasing the height and improving the strength of the fence at one boundary to avoid pupils scaling it and reduce noise to the nearby housing. The headteacher has also restructured the organisation of staff during break and lunchtimes to ensure that key areas within the grounds have a higher staffing level. The increased number of places at the school will allow the staff numbers also to be increased and thereby have more staff on duty at lunch and breaktimes
 - Antisocial behaviour of pupils outside of school grounds - smoking, swearing and numbers of boys outside the school premises was highlighted. The Leadership Team and Governors of the School are committed to improving and managing behaviour of pupils, both on-site and off-site. The Headteacher has made recent changes in the structure of the school day so that the number of students now able to go off-site during school hours has been cut by 75%. Smoking is not permitted within the school or within 50m of the school boundary. The Headteacher is keen to work in partnership with the local community and welcomes their direct contact to explore any further issues.

Conclusions

8. It is recommended that approval be given to the publication of a public notice for the increased capacity at Prospect School under Section 19 (1) of the Education and Inspections Act 2006. Further representation can be made during this process and reported back to Executive Member following the end of the notice period if objections received.

CORPORATE OR LEGAL INFORMATION:**Links to the Strategic Plan**

Hampshire maintains strong and sustainable economic growth and prosperity:	Yes
People in Hampshire live safe, healthy and independent lives:	Yes
People in Hampshire enjoy a rich and diverse environment:	Yes
People in Hampshire enjoy being part of strong, inclusive communities:	Yes

Other Significant Links

Links to previous Member decisions:	
<u>Title</u>	<u>Date</u>
Direct links to specific legislation or Government Directives	
<u>Title</u>	<u>Date</u>

Section 100 D - Local Government Act 1972 - background documents

The following documents discuss facts or matters on which this report, or an important part of it, is based and have been relied upon to a material extent in the preparation of this report. (NB: the list excludes published works and any documents which disclose exempt or confidential information as defined in the Act.)

<u>Document</u>	<u>Location</u>
None	

EQUALITIES IMPACT ASSESSMENT:**1. Equality Duty**

1.1 The County Council has a duty under Section 149 of the Equality Act 2010 ('the Act') to have due regard in the exercise of its functions to the need to:

- Eliminate discrimination, harassment and victimisation and any other conduct prohibited by or under the Act with regard to the protected characteristics as set out in section 4 of the Act (age, disability, gender reassignment, marriage and civil partnership, pregnancy and maternity, race, religion or belief, sex and sexual orientation);
- Advance equality of opportunity between persons who share a relevant protected characteristic within section 149(7) of the Act (age, disability, gender reassignment, pregnancy and maternity, race, religion or belief, sex and sexual orientation) and those who do not share it;
- Foster good relations between persons who share a relevant protected characteristic within section 149(7) of the Act (see above) and persons who do not share it.

Due regard in this context involves having due regard in particular to:

- The need to remove or minimise disadvantages suffered by persons sharing a relevant protected characteristic that are connected to that characteristic;
- Take steps to meet the needs of persons sharing a relevant protected characteristic that are different from the needs of persons who do not share it;
- Encourage persons sharing a relevant protected characteristic to participate in public life or in any other activity in which participation by such persons is disproportionately low.

1.2 Equalities Impact Assessment:

Equality and diversity objectives are not considered to be adversely affected by the proposals of this report.

2. Impact on Crime and Disorder:

2.1. Crime and disorder objectives are not considered to be adversely affected by the proposals of this report.

3. Climate Change:

How does what is being proposed impact on our carbon footprint / energy consumption?

There is no negative impact on carbon footprint /energy consumption.

How does what is being proposed consider the need to adapt to climate change, and be resilient to its longer term impacts?

Not applicable

This page is intentionally left blank

HAMPSHIRE COUNTY COUNCIL

Decision Report

Decision Maker	Executive Member for Education and Skills, Human Resources and Performance
Date:	27 March 2019
Title:	School term and holiday dates for 2020/21
Report From:	Director of Children's Services

Contact name: Martin Goff (Head of Information, Transport and Admissions)

Tel: 01962 846185

Email: martin.goff@hants.gov.uk

Recommendation(s)

1. It is recommended that the Executive Member for Education and Skills, Human Resources and Performance approves the school term and holiday dates that are supported by representative members of Hampshire County Council's (HCC) Conditions of Service Working Party (CoSWoP) and are set out in Appendix 1 of the report, for the school year 2020/21

Executive Summary

2. The purpose of this report is to inform the Executive Member for Education and Skills, Human Resources and Performance on the need to decide the pattern of school term and holiday dates for school year 2020/21 and to note the outcomes of the consultation process that has been followed.

2.1 For the school year 2020/21 Hampshire County Council (HCC) and representatives from CoSWoP devised a pattern of school term and holiday dates. It included all the features that are an aim of the consultation in Hampshire.

2.2 The proposed pattern of holiday and term dates is shown in Appendix 1. Key features of the proposed pattern are half term lengths that are consistent with the usual school year pattern taking account of Christmas, Easter and summer GCSE and A Level examinations timetable.

Contextual information

3. It is the responsibility of a local authority to schedule a school year which provides the statutory 190 pupil days and 195 teacher days in voluntary controlled and community schools. The structure for delivering this entitlement has been the subject of national and local debate in recent years.

- 3.1 The Local Government Association (LGA) National Standing Committee on the School Year has, in the past, been active in seeking to establish a National School Year but this process has now ended.
- 3.2 Hampshire teachers' professional associations, represented by the Conditions of Service Working Party (CoSWoP), have worked closely with officers of the local authority over several years in order to secure an agreed approach to setting dates for the county's schools.
- 3.3 Establishing more balanced term lengths with regular breaks supports an aim of the corporate strategy, to maximising wellbeing, by helping schools and families to plan learning more effectively. Another aim, Hampshire, safer and more secure for all, is supported by achieving agreement on dates across the county, so that schools and their communities can work effectively together in school and out of school hours.
- 3.4 Children benefit from good attendance in school; in particular it supports educational achievement and lays the foundation for a positive contribution to society and economic well-being. Properly structured periods of learning and rest help children to remain healthy, enjoy their school time and achieve more. The publication of dates well in advance enables families to plan holidays and arrange childcare so that school attendance need not be compromised.

Finance

4. No financial implications.

Consultation and Equalities

5. Schools were invited to comment on their preferred pattern of dates via a Schools' Communication dated 30 November 2018, comments being required by 25 January 2019. Only one supportive comment was received and no negative ones.

Conclusions

6. The proposed pattern, in Appendix 1, is recommended to the Executive Member for Education and Skills, Human Resources and Performance as accepted by those schools and best meeting the requirements that are applied to designing the school year for 2020/21.

SEPTEMBER 2020						OCTOBER 2020						NOVEMBER 2020						
M		7	14	21	28	M		5	12	19	26	M		2*	9	16	23	30
T	1	8	15	22	29	T		6	13	20	27	T		3	10	17	24	
W	2	9	16	23	30	W		7	14	21	28	W		4	11	18	25	
T	3*	10	17	24		T	1	8	15	22	29	T		5	12	19	26	
F	4	11	18	25		F	2	9	16	23#	30	F		6	13	20	27	
S	5	12	19	26		S	3	10	17	24	31	S		7	14	21	28	
S	6	13	20	27		S	4	11	18	25		S	1	8	15	22	29	
DECEMBER 2020						JANUARY 2021						FEBRUARY 2021						
M		7	14	21	28	M		4*	11	18	25	M		1	8	15	22*	
T	1	8	15	22	29	T		5	12	19	26	T		2	9	16	23	
W	2	9	16	23	30	W		6	13	20	27	W		3	10	17	24	
T	3	10	17	24	31	T		7	14	21	28	T		4	11	18	25	
F	4	11	18#	25		F	1	8	15	22	29	F		5	12#	19	26	
S	5	12	19	26		S	2	9	16	23	30	S		6	13	20	27	
S	6	13	20	27		S	3	10	17	24	31	S		7	14	21	28	
MARCH 2021						APRIL 2021						MAY 2021						
M	1	8	15	22	29	M		5	12	19*	26	M		3	10	17	24	31
T	2	9	16	23	30	T		6	13	20	27	T		4	11	18	25	
W	3	10	17	24	31	W		7	14	21	28	W		5	12	19	26	
T	4	11	18	25		T	1#	8	15	22	29	T		6	13	20	27	
F	5	12	19	26		F	2	9	16	23	30	F		7	14	21	28#	
S	6	13	20	27		S	3	10	17	24		S	1	8	15	22	29	
S	7	14	21	28		S	4	11	18	25		S	2	9	16	23	30	
JUNE 2021						JULY 2021						AUGUST 2021						
M		7*	14	21	28	M		5	12	19	26	M		2	9	16	23	30
T	1	8	15	22	29	T		6	13	20	27	T		3	10	17	24	31
W	2	9	16	23	30	W		7	14	21	28	W		4	11	18	25	
T	3	10	17	24		T	1	8	15	22	29	T		5	12	19	26	
F	4	11	18	25		F	2	9	16	23#	30	F		6	13	20	27	
S	5	12	19	26		S	3	10	17	24	31	S		7	14	21	28	
S	6	13	20	27		S	4	11	18	25		S	1	8	15	22	29	

Bank and Public Holidays 2020/2021

Christmas Day	25 December 2020	Easter Monday	5 April 2021
Boxing Day	26 December 2020	May Day Holiday	3 May 2021
New Year's Day Holiday	1 January 2021	Spring Bank Holiday	31 May 2021
Good Friday	2 April 2021	Summer Bank Holiday	30 August 2021

* First day after break
Last day before break



Bank Holidays and National Holidays

Autumn Term 2020 starts on Thursday 3 September 2020 and ends on Friday 18 December 2019

(Half term from Monday 26 October to Friday 30 October 2020)

Spring Term 2021 starts on Monday 4 January 2021 and ends on Thursday 1 April 2021

(Half term from Monday 15 February to Friday 19 February 2021)

Summer Term 2021 starts on Monday 19 April 2021 and ends on Friday 23 July 2021

(Half term from Monday 31 May to Friday 4 June 2021)

Term	Start date	End Date
Autumn 2020	3 September 2020	18 December 2020
	Half term 26 October- 30 October 2020	
Spring 2021	4 January 2021	1 April 2021
	Half term 15 - 19 February 2021	
Summer 2021	19 April 2021	23 July 2021
	Half term 31 May – 4 June 2021	

Please note that the dates as published are correct.

It has now been agreed and confirmed that 3 September 2020 is the start date for the Autumn Term 2020/21

CORPORATE OR LEGAL INFORMATION:

Links to the Strategic Plan

This proposal does not link to the Strategic Plan but, nevertheless, requires a decision because it is a duty of the Council, under section 32 of the Education Act 2002, to set the school year for its voluntary controlled and community schools.

Section 100 D - Local Government Act 1972 - background documents

The following documents discuss facts or matters on which this report, or an important part of it, is based and have been relied upon to a material extent in the preparation of this report. (NB: the list excludes published works and any documents which disclose exempt or confidential information as defined in the Act.)

Document

Location

None

IMPACT ASSESSMENTS:**1. Equality Duty**

1.1. The County Council has a duty under Section 149 of the Equality Act 2010 ('the Act') to have due regard in the exercise of its functions to the need to:

- Eliminate discrimination, harassment and victimisation and any other conduct prohibited under the Act;
- Advance equality of opportunity between persons who share a relevant protected characteristic (age, disability, gender reassignment, pregnancy and maternity, race, religion or belief, gender and sexual orientation) and those who do not share it;
- Foster good relations between persons who share a relevant protected characteristic and persons who do not share it.

Due regard in this context involves having due regard in particular to:

- a) The need to remove or minimise disadvantages suffered by persons sharing a relevant characteristic connected to that characteristic;
- b) Take steps to meet the needs of persons sharing a relevant protected characteristic different from the needs of persons who do not share it;
- c) Encourage persons sharing a relevant protected characteristic to participate in public life or in any other activity which participation by such persons is disproportionately low.

1.2. Equalities Impact Assessment:

The school year will apply to all voluntary controlled and community schools. It will form the basis for the school year in Hampshire academies, foundation and voluntary aided schools (which are able to set their own school year). Also it is utilised by sixth form providers. The setting of the school year has a neutral impact for all the protected characteristic groups and other policy consideration groups.

2. Impact on Crime and Disorder:

2.1. None

3. Climate Change:

None